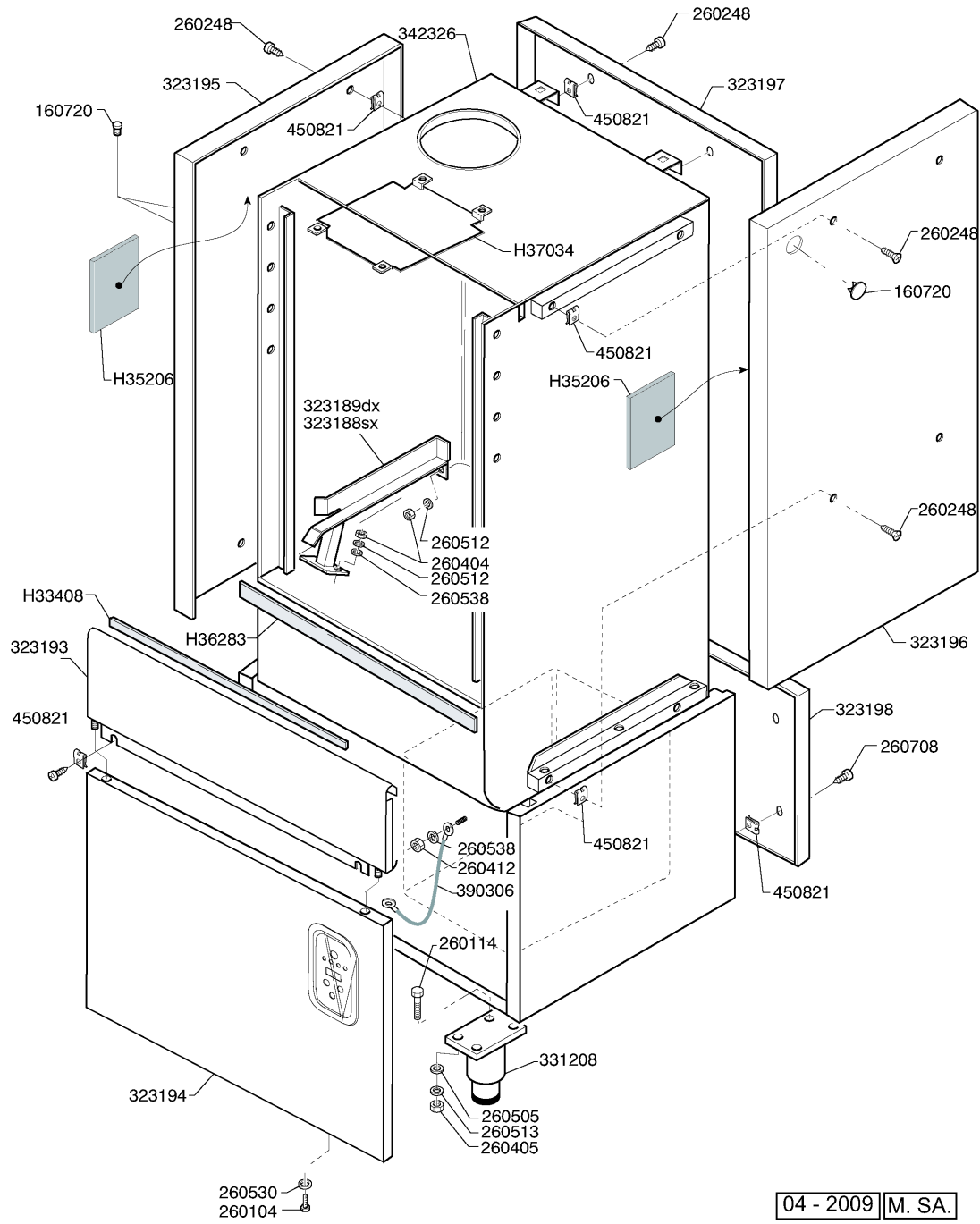


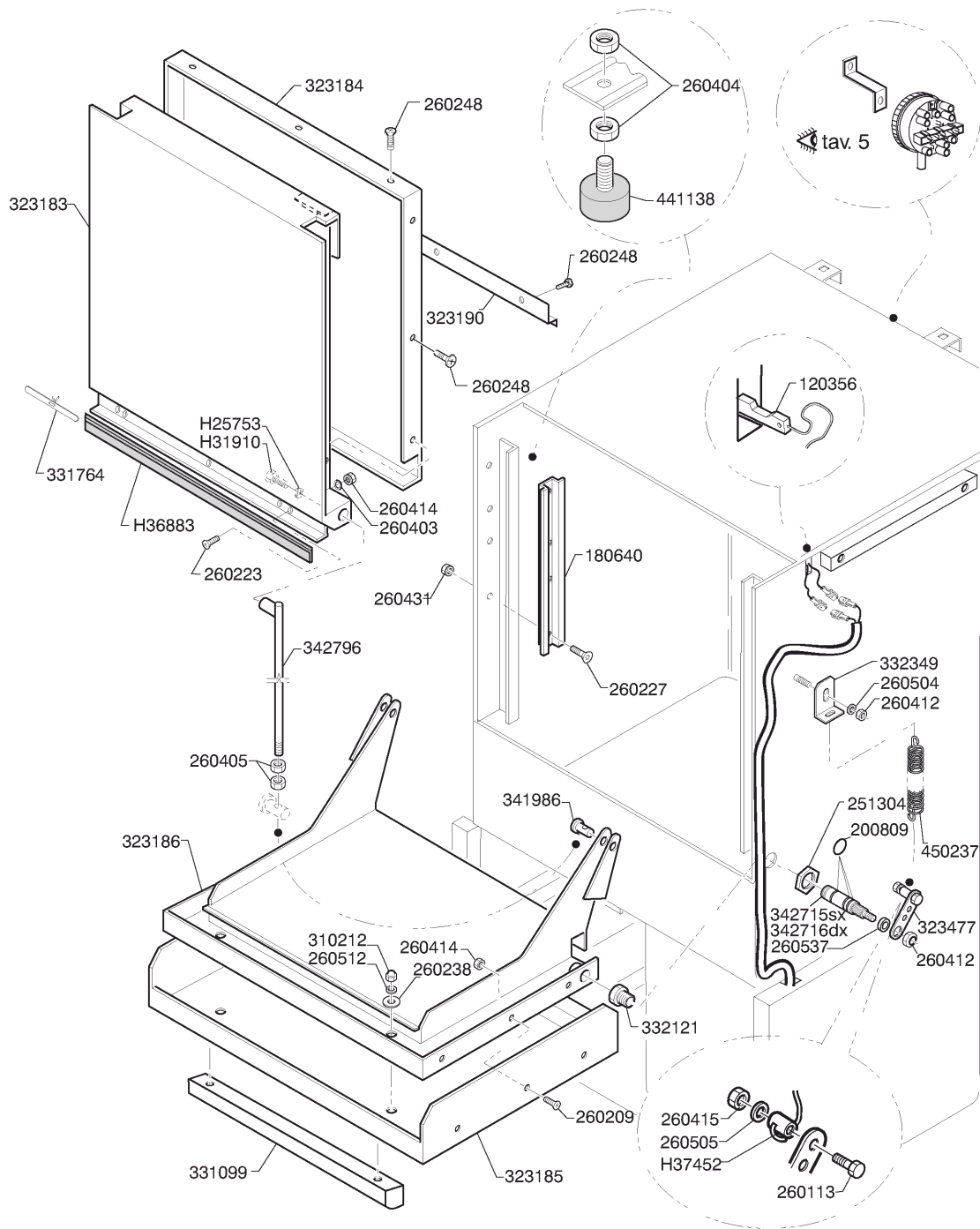
2 - Hood



2 - Hood

CODE	DESCRIPTION
160720	PLUG HEYCO D.8
260104	STAINL.ST TE-SCREW A2 6X16 UNI
260114	SCREW TE 8X25
260248	SPECIAL SCREW TB 5X12
260404	STAINLESS STEEL NUTS D6 UNI 55
260405	NUT D.8
260412	SELF-LOCKING NUT M6
260505	STAINL.STEEL FLAT WASHER D8
260512	ST/ST GROWER WASHER D6
260513	GROWER WASHER D8
260530	STAINL.ST WASHER 7X22X2
260538	WASHER 18X6X1,5 ST/ST
260708	SCREW 3,9X22
323188	LEFT RACK GUIDE GE50
323189	RIGHT RACK GUIDE GE50
323193	FRONT PANEL GE50
323194	PANEL GE50
323195	LEFT SIDE PANEL GE50
323196	RIGHT SIDE PANEL GE50
323197	BACK PANEL GE50
323198	BACK PANEL GE50
331208	ST.STEEL FOOT
342326	HOOD+TANK GE50
390306	CABLE
450821	SPRING CLIP FASTENER SNU 3634
H33408	GASKET FOR FRONT PANEL GF70
H35206	SELF-ADHESIVE BLOCK
H36283	GASKET 20X10
H37034	STEAM COVER

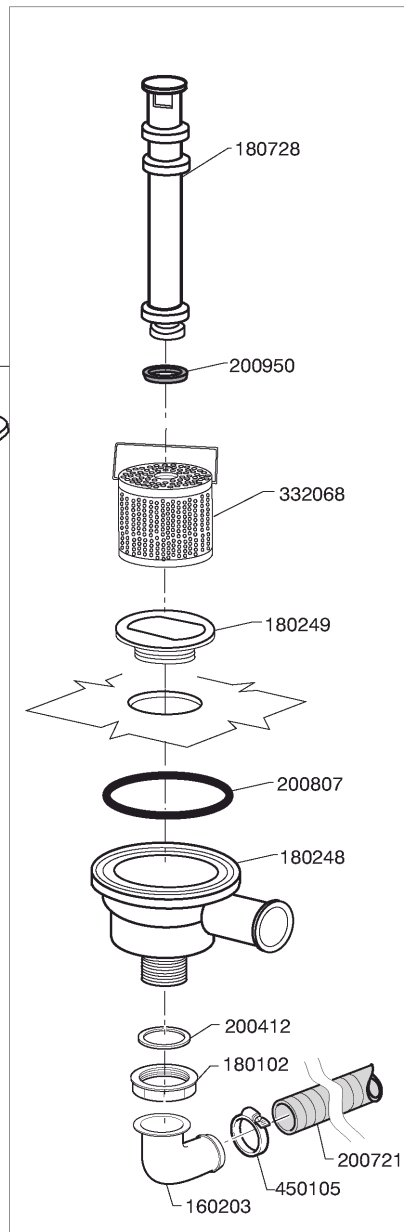
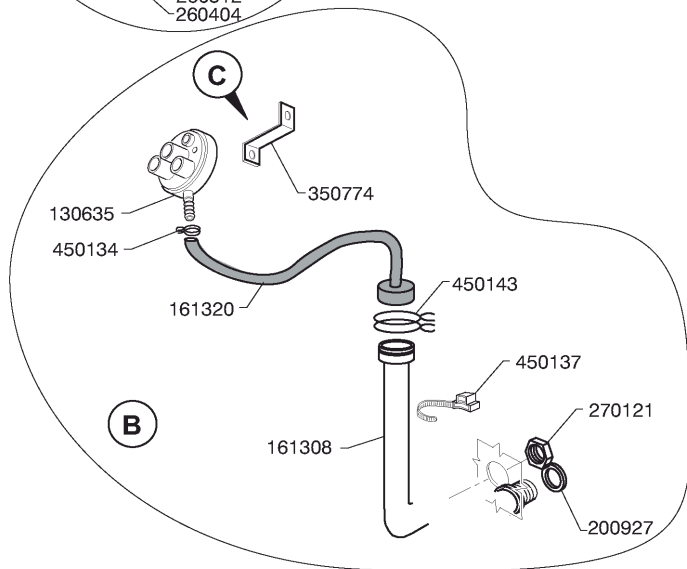
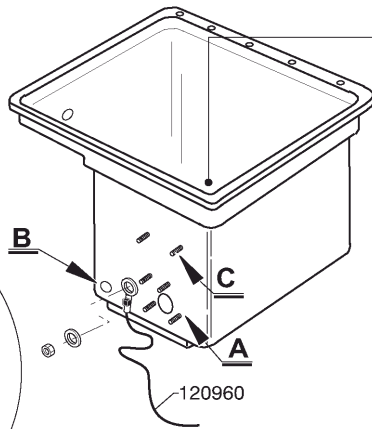
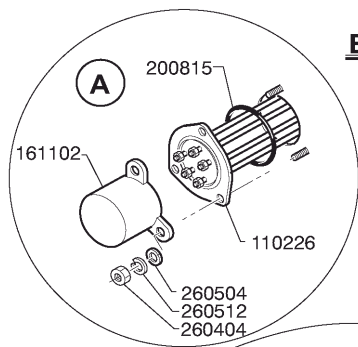
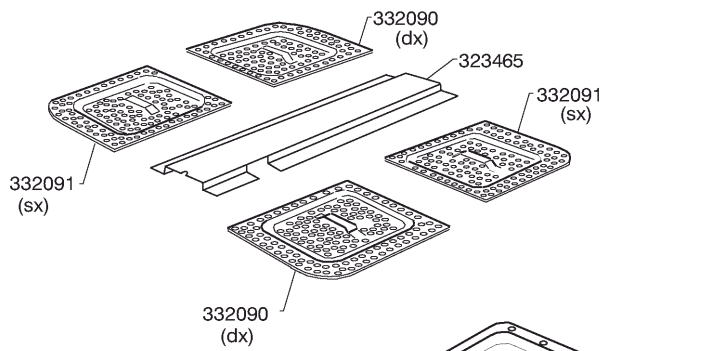
3 - Door component



07 - 2008 | M. SA.

3 - Door component

CODE	DESCRIPTION
120356	DOOR MAGN.SWITCH
180640	DOOR RAIL FOR GE
200809	OR GASKET 1,78X8,73X12,29
251304	ST/ST LOCK NUT 3/8
260113	STAINL.ST.TE SCREW 8X20 A2 UNI
260209	SCREW TCP 5X8
260223	M5X12 MSH/HD SCREW SPECIAL S/S
260227	M5 X 30 MUSHROOM HEAD SCREW
260238	M4 X 10 MUSH/HD SCREW
260248	SPECIAL SCREW TB 5X12
260403	NUTS D.5
260404	STAINLESS STEEL NUTS D6 UNI 55
260405	NUT D.8
260412	SELF-LOCKING NUT M6
260414	SELF-LOCKING NUT M5
260415	STAINLESS STEEL SELF-LOCKING N
260431	NUT M5 DIN 6923
260504	ST/ST FLAT WASHER D6
260505	STAINL.STEEL FLAT WASHER D8
260512	ST/ST GROWER WASHER D6
260537	STAINL.STEEL FLAT WASHER D13X2
310212	BLIND NUT M6 BLACK NYLON
323183	UPPER DOOR GE50
323184	INSUL.PANEL FOR UP.DOOR GE50
323185	LOWER DOOR GE50
323186	INSUL.PANEL FOR LOW.DOOR GE50
323190	UPPER COVER GE50
323477	TRAVERSA SOST.VASCHE AC/ACR
331099	GE50 DOOR HANDLE
331764	FIXING PLATE FOR B-F DOOR GASK
332121	BUSH FOR HOOD GE
332349	BRACKET FOR DOOR SPRING GE
341986	"GL"-DOOR PIN
342715	LEFT SPINDLE FOR GE DOOR
342716	RIGHT SPINDLE GE DOOR
342796	TIE ROD DOOR GE50
441138	PROTECTION
450237	DOOR SPRING GE
H25753	REPLACED BY 260511
H31910	SCREW
H36883	GASKET FOR DOOR GE
H37452	BUSH FOR DOOR SPRING

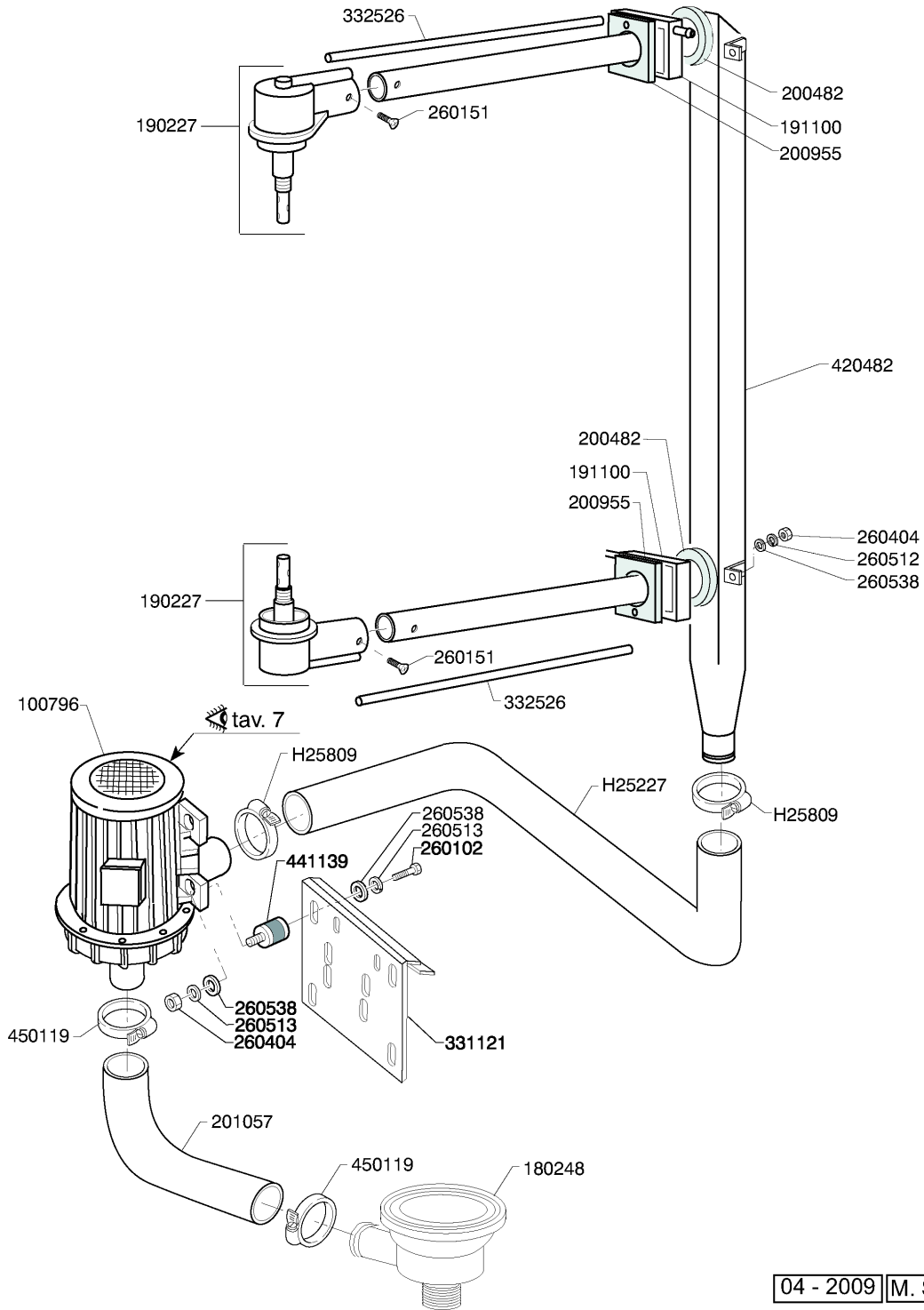


07 - 2008 | M. SA.

4 - Tank

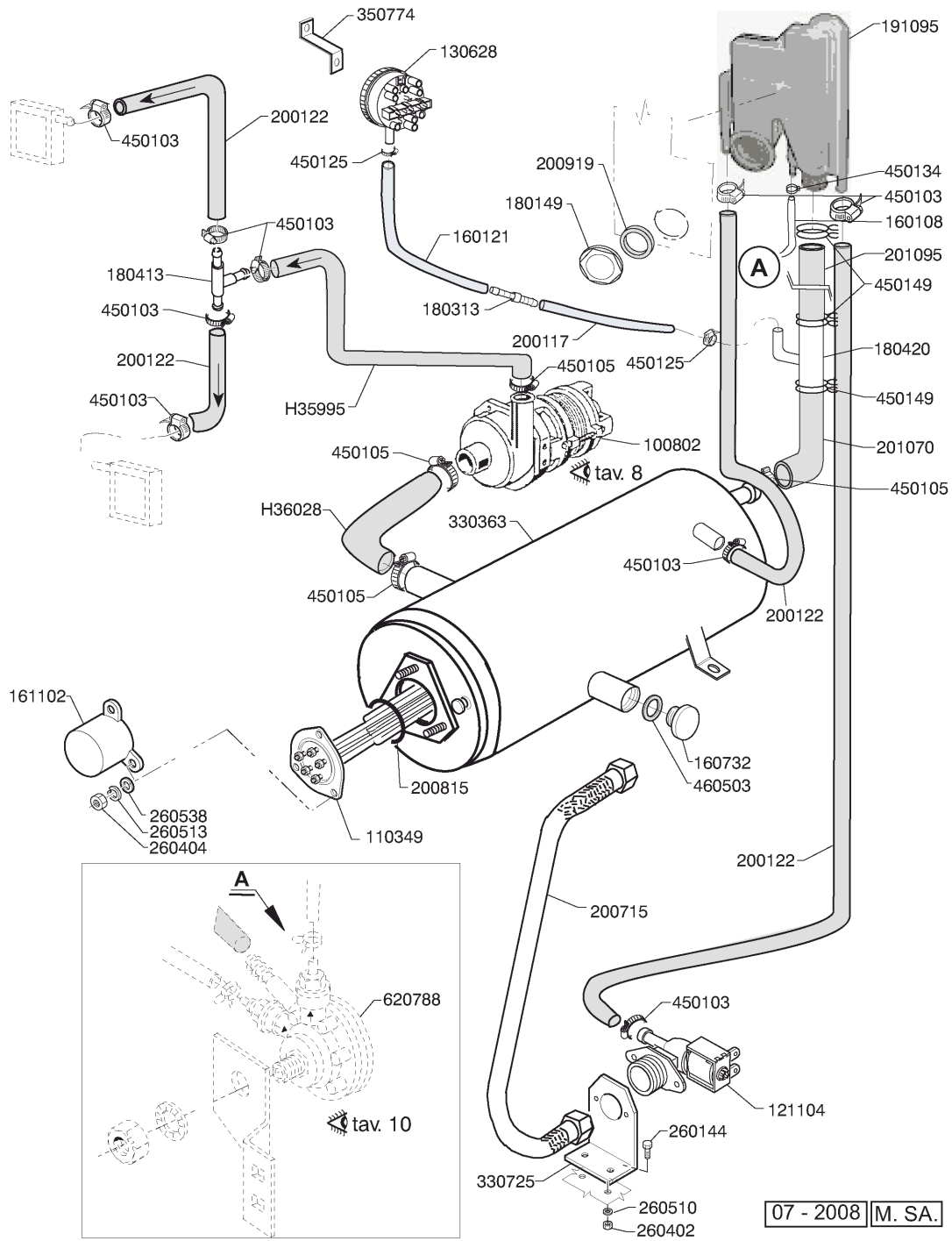
CODE	DESCRIPTION
110226	HEAT. ELEMENT 3000W 230/400V
120960	PROBE C-G
130635	PRESSURE SWITCH 190-40
160203	ELBOW 1"1/2 N-S-F-C /DRAIN
161102	ELEMENT COVER MOPL.
161308	AIR CHAMBER C95-155
161320	HOSE FOR AIR CHAMBER
180102	DRAIN PIPE NUT 1"1/2 F45-55
180248	SUCTION TANK
180249	NUT
180728	OVERFLOW PIPE
200412	GASKET DRAIN 11/2" 45X33X3
200721	DRAIN HOSE 28X35 2MT.
200807	O-RING 3,53 X 110,72
200815	O-RING F. HEAT.ELEM.
200927	GASKET FOR AIR TRAP
200950	VITON GASKET
260404	STAINLESS STEEL NUTS D6 UNI 55
260504	ST/ST FLAT WASHER D6
260512	ST/ST GROWER WASHER D6
270121	NUT FOR AIR TRAP
323465	STRAINERS SUPPORT
332068	STRAINER
332090	RIGHT STRAINER
332091	TANK LEFT STRAINER
350774	BRACKET
450105	CLAMP FE ZN. 26-38 H=12,2
450134	ELASTIC HOSE CLIP D.9,3/8,8
450137	COLLAR CONNECTION WITH BASE 31
450143	CLAMP D.39,7 X 37,7

5 - Wash Column



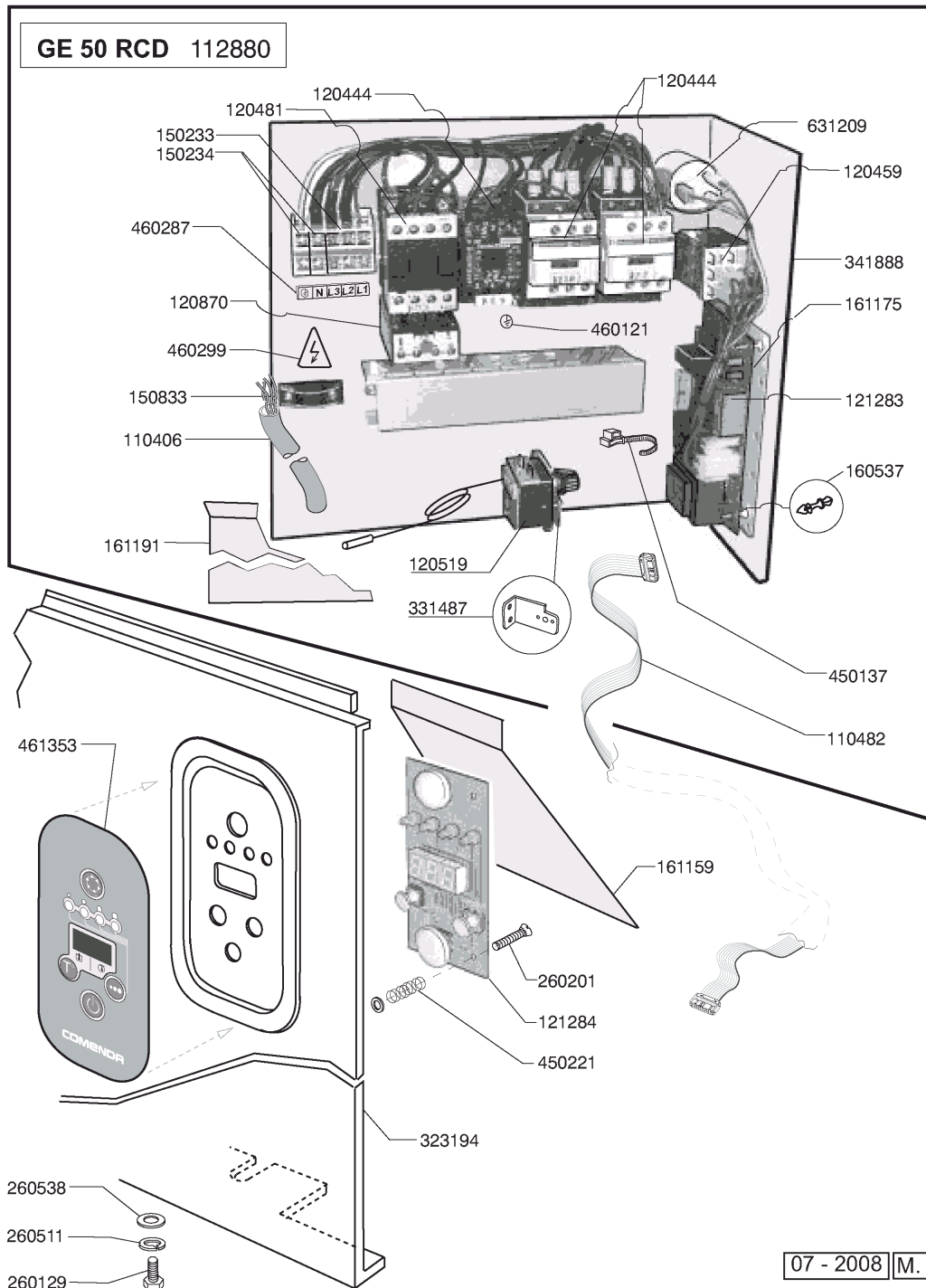
5 - Wash Column

CODE	DESCRIPTION
100796	PUMP 2HP 400/3/50HZ LGB
180248	SUCTION TANK
190227	ARM SUPPORT
191100	RINSE COLLECTOR C-LC
200482	GASKET 60X54 RAMP C140
200955	GASKET
201057	WASH PUMP INLET HOSE
260102	SCREW TE 6X10
260151	SCREW TE 4X12
260404	STAINLESS STEEL NUTS D6 UNI 55
260512	ST/ST GROWER WASHER D6
260513	GROWER WASHER D8
260538	WASHER 18X6X1,5 ST/ST
331121	FIXING PLATE FOR PUMP ACR
332526	RINSE HOSE
420482	WASH COLUMN GE50
441139	VIBRATION-DAMPING FEET 25X20X6
450119	CLAMP FE ZN. 58-75 H=12,2
H25227	GE50 PUMP OUTLET HOSE
H25809	CLAMP 40-64



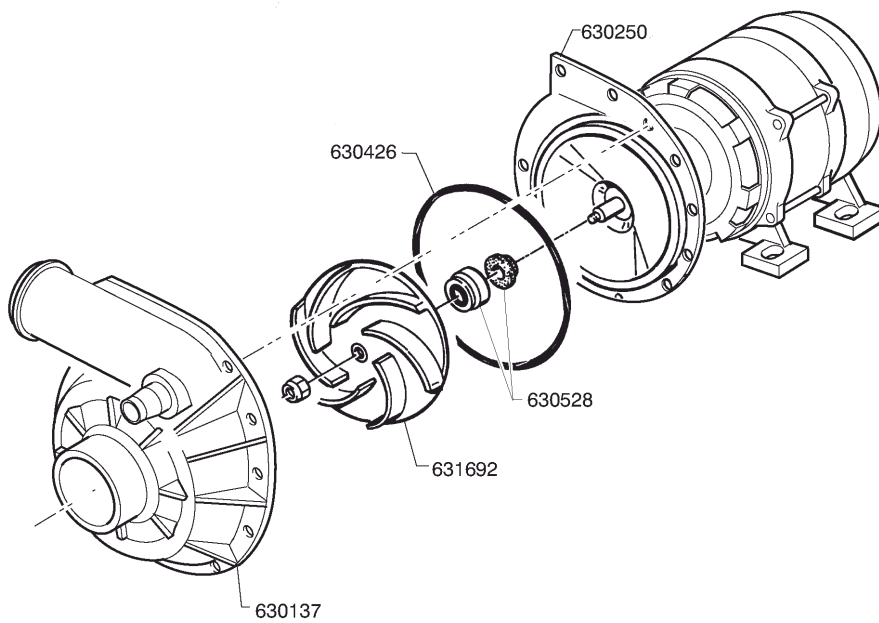
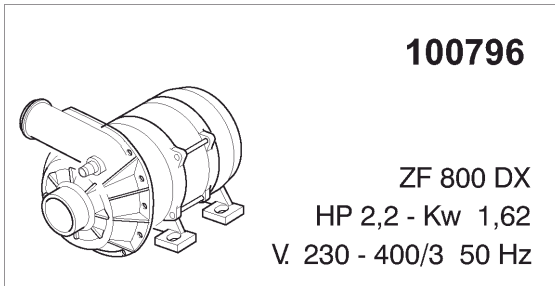
6 - Rinse

CODE	DESCRIPTION
100802	PUMP HP 0,3 230V-50HZ
110349	HEAT.ELEMENT 6000W 230/400V
121104	SOLENOID VALVE 8 LT/M
130628	PRESSURE SWITCH
160108	INJECT.INLET HOSE D.8X5
160121	HOSE EPDM D. 5 X 9
160732	PLUG 3/4"
161102	ELEMENT COVER MOPL.
180149	PLASTIC NUT
180313	TEE-NIPPLE
180413	TEE NIPPLE D.11,5 - RINSE ASSE
180420	TEE-NIPPLE
191095	CONTAINER FOR BREAK TANK
200117	RUBBER HOSE 7X16
200122	HOSE 11X19
200715	HOSE WATER INLET 2M STAINL.ST
200815	O-RING F. HEAT.ELEM.
200919	GASKET FOR SUCTION BASIN FC
201070	HOSE
201095	HOSE BT-TE GE50
260144	SCREW TE 4X6
260402	STAINLESS STEEL NUT D4 UNI 55
260404	STAINLESS STEEL NUTS D6 UNI 55
260510	GROWER WASHER D.4
260513	GROWER WASHER D8
260538	WASHER 18X6X1,5 ST/ST
330363	BOILER FOR BREAK TANK
330725	STANDARD BRACKET F.SOLEN.VALV
350774	BRACKET
450103	CLAMP FE ZN. 13-20 H=9
450105	CLAMP FE ZN. 26-38 H=12,2
450125	ELASTIC CLAMP D. 10,4X9,8
450134	ELASTIC HOSE CLIP D.9,3/8,8
450149	CLAMP D.34,6 X 36,4
460503	SEALING WASHER 38X27X2(3/4)
620788	RINSE AID INJECTOR H21428
H35995	MANICOTTO MAND.POMPA RISC.
H36028	HOSE BOILER/TEE



7 - Control box

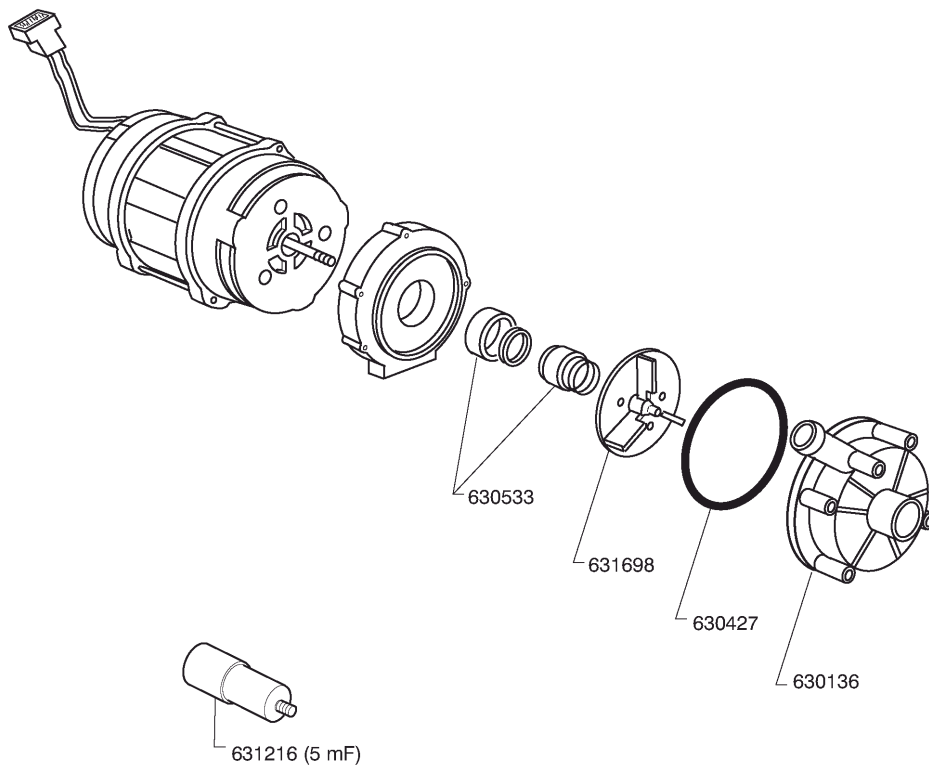
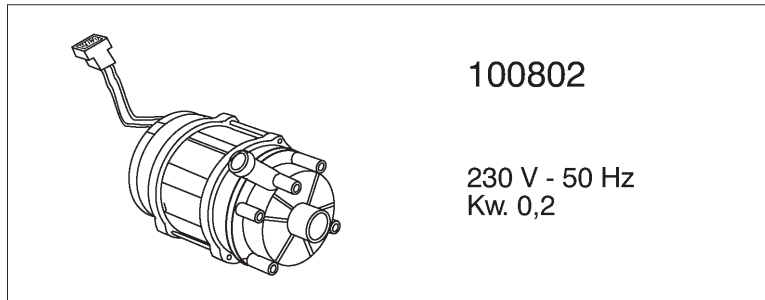
CODE	DESCRIPTION
110406	CAVO PENT.GOMMA 5X2,5 H07 RNF
110482	CABLE FOR PCB FC-C-GE
112880	WIRING C1300E BT
120444	CONTACTOR 9A 220V 50HZ
120459	AUXIL.RELE 16A 220V
120481	CONTACTOR 9A-230V 50/60HZ
120519	SECURITY THERMOSTAT 95-125Ø
120870	OVERLOAD RELAY 3/5
121283	ELECTRONIC PANEL "C-GE"
121284	ELECTRONIC CONTROL PANEL C-GE
150233	TERMINAL BLOCK
150234	TERMINAL BLOCK
150833	CABLE HOLDER BC/BR
160537	ELECTRONIC CARD SPACER
161159	PROTECT. COMMANDS SWITCHBOARD
161175	PROTECTION
161191	CONTROL BOX COVER
260129	SCREW TE M 5X20
260201	SCREW TCP 3X10
260511	GROWER WASHER D.5
260538	WASHER 18X6X1,5 ST/ST
323194	PANEL GE50
331487	BRACKET FOR 1 THERMOSTAT
341888	CONTROL BOX SUPPORT
450137	COLLAR CONNECTION WITH BASE 31
450221	SPRING FOR ELECTRONIC TIMER
460121	"EARTH" PLATE
460287	TARGH.ADES.MORS.LINEA C
460299	TARGH.ADES.TENSIONE
461353	PLATE C-GE ELECTRONIC
631209	ANTI-NOISE FILTER



07 - 2008 | M. SA.

8 - Wash pump

CODE	DESCRIPTION
100796	PUMP 2HP 400/3/50HZ LGB
630137	PUMP VOLUTE LGB ZF800DX
630250	BACK PLATE PUMP ZF650/800
630426	GASKET LGB ZF800
630528	SEAL LGB ZF800 2HP
631692	IMPELLER PUMP ZF650/800

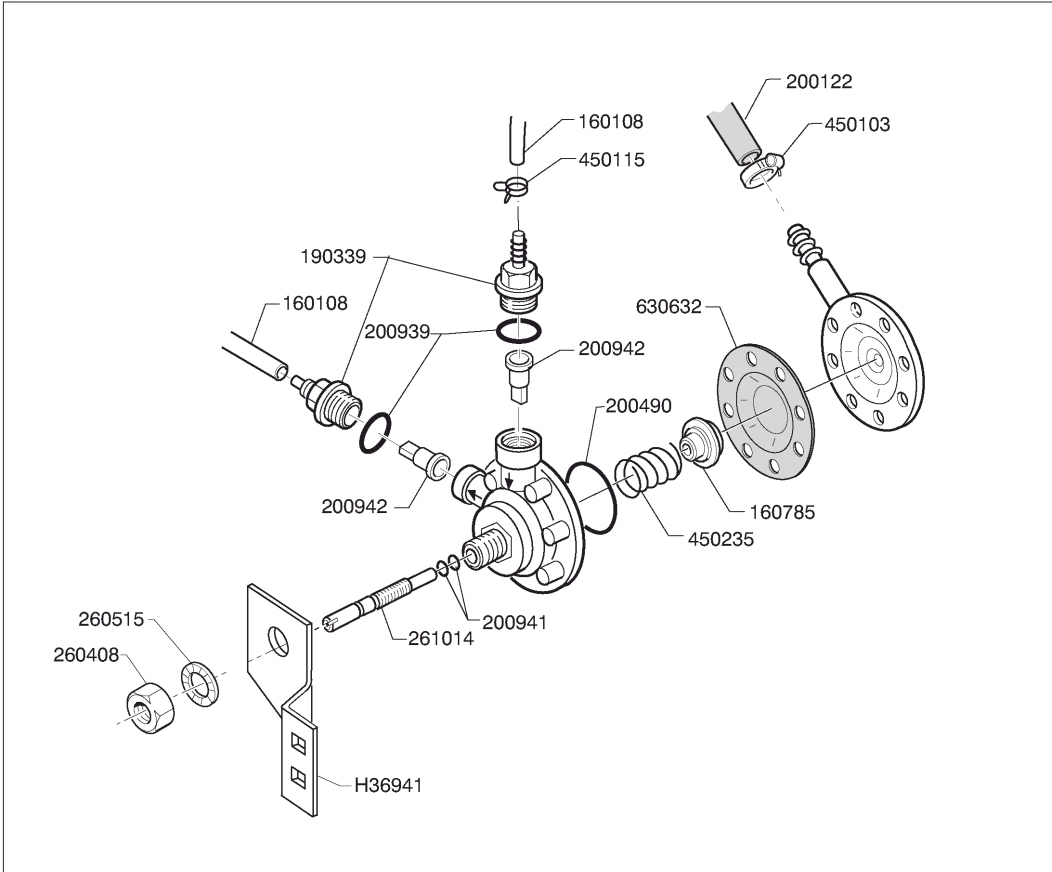
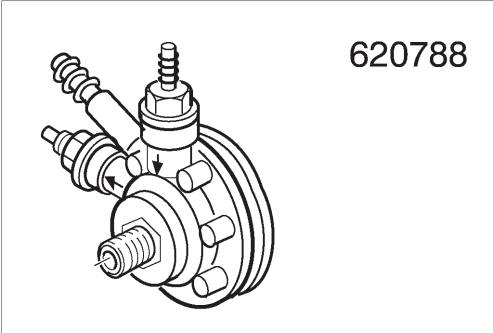


9 - Rinse pump

CODE	DESCRIPTION
100802	PUMP HP 0,3 230V-50HZ
630136	PUMP VOLUTE LGB ZF131DX
630427	O-RING FOR PUMP ZF131DX
630533	PUMP SEALS WASH PUMP ZF131DX
631216	CAPACITOR 6.3 MF 450V
631698	PUMP IMPELLER ZF131DX

10 - Wash and rinse arm

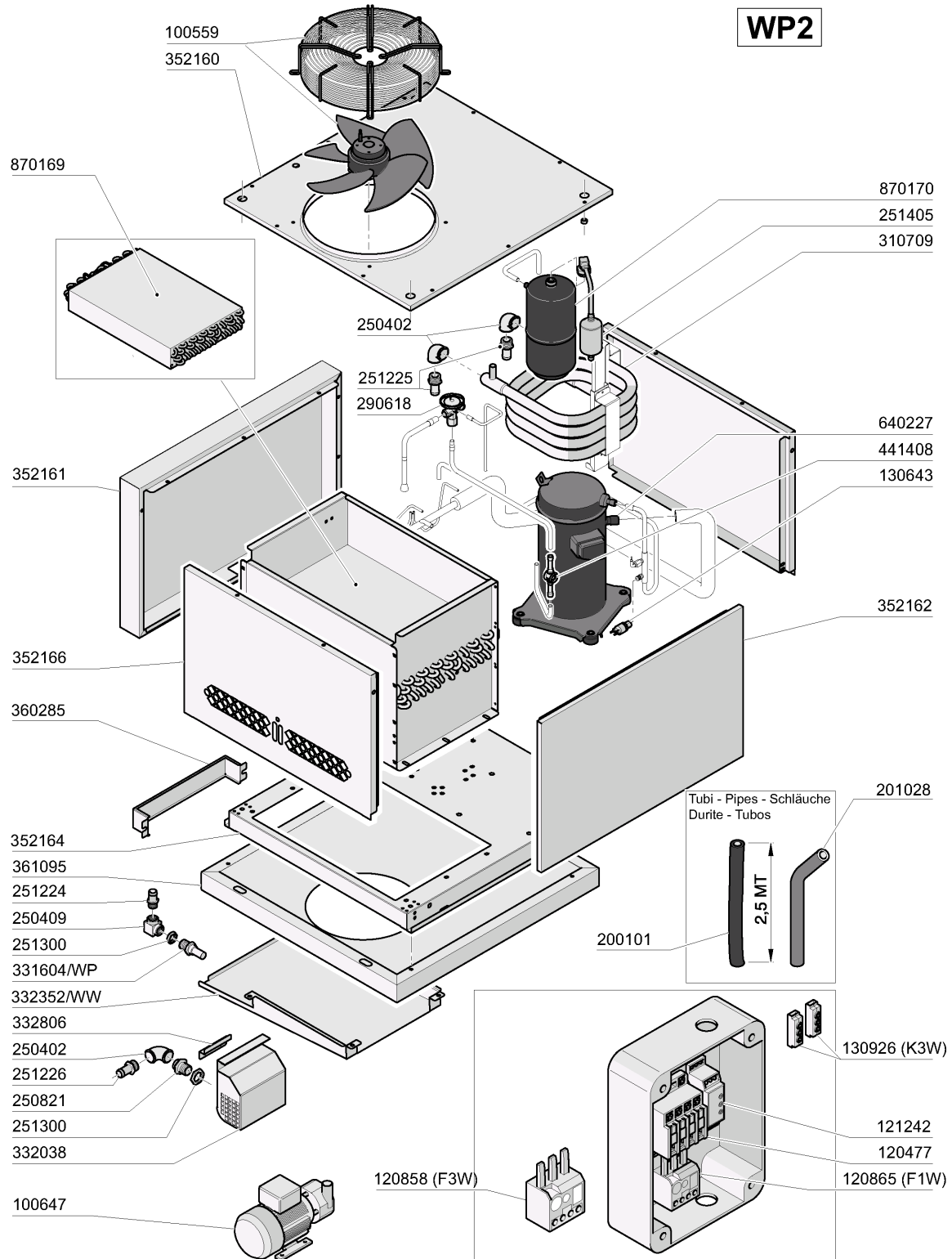
CODE	DESCRIPTION
160768	PLUG FOR "C95-155" WASH ARM
190636	BUSH FOR C95-155-165 WASH ARM
190641	BUSH FOR C95-155-165 RINSE ARM
200809	OR GASKET 1,78X8,73X12,29
200813	OR GASKET 2,21X16,36X20,78
261009	RETAIN.SCREW FOR WASH-RINSE AR
280409	RETAIN.LOCK NUT CENTR.CROSS C1
380314	RINSE JETS 801/HR
420580	WASH ARM GE50
430338	RINSE ARM GE100
450218	SPRING F.RINSE ARM RETAIN.SCRE



11 - Rinse aid injector

CODE	DESCRIPTION
160108	INJECT.INLET HOSE D.8X5
160785	GUIDE FOR SPRING RINSE AID INJ
190339	RINSE AID INJECTOR CONNECTION
200122	HOSE 11X19
200490	PROTECTION GASKET MOD.ADV.
200939	OR GASKET
200941	OR GASKET
200942	VALVE RINSE INJECTOR HVD
260408	S/S NUTS D.12
260515	GROWER WASHER D12
261014	SCREW
450103	CLAMP FE ZN. 13-20 H=9
450115	ELASTIC CLAMP D.8,3/7,8
450235	SPRING RINSE AID INJECTOR
620788	RINSE AID INJECTOR H21428
630632	DIAPHRAGM RINSE INJECTOR HVD
H36941	BRACKET

WP2



12 - Heat pumps WP2

CODE	DESCRIPTION
100559	FAN WP2-WP3
100647	PUMP HP 0,20 220/240/3 4226
120477	CONTACTOR ABB 9A 220V 50/60HZ
120858	OVERLOAD RELAY ABB 0,4-0,63A
120865	OVERLOAD RELAY ABB 6-8,5A
121242	TIMER LAV1000
130643	HIGH PRESSURE PRESS.SWITCH WP
130926	CONTACT ABB 1NO
200101	RUBBER TUBE 25X35
201028	OUTLET HOSE F. PREWASH 400MM A
250402	INOX ELL FF 3/4"
250409	INOX ELL FF 1/2"
250821	NIPPLES FOR STEAM COIL
251224	NIPPLE 1/2" WP
251225	NIPPLE 3/4" WP
251226	NIPPLE 3/4" WP
251300	S/S LOCK NUT 1/2" AC-ACR
251405	FILTER WP4
290618	TERMOSTATIC VALVE WP2-WP3
310709	GAS/WATER CONDENSER WP2
331604/WP	TUBO PER RICIR. ACQUA GE WP2/3
332038	FILTER FOR PUMP
332352/WW	PARASPRUZZI CAMINO GE60-65 WP2
332806	BRACKET WITHOUT ASP.FILTER WP
352160	COVER WP2-WP3
352161	BACK COVER WP2-WP3
352162	FRONT COVER WP2-WP3
352164	BASEMENT WP2-WP3
352166	LEFT SIDE PANEL WP2-WP3
360285	BACK COVER WP2/3
361095	SUPPORT
441408	INDICATORE DI FLUSSO (WP)
640227	RICEVITORE LIQUIDO (WP2-WP3)
870169	EVAPORATORE (WP2-WP3)
870170	COMPRESSORE POMPA WP2